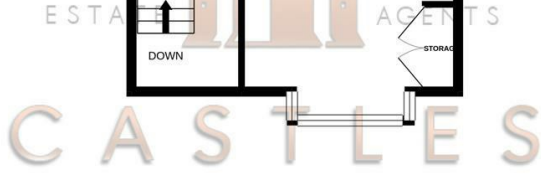
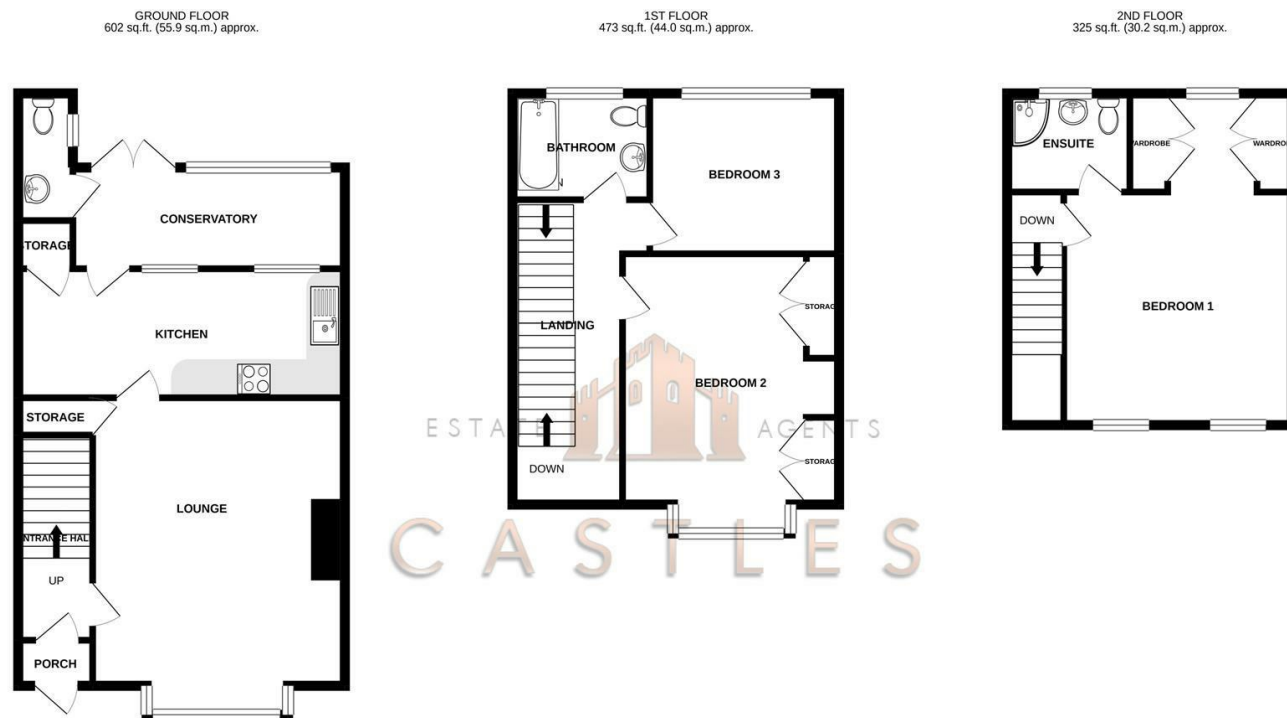


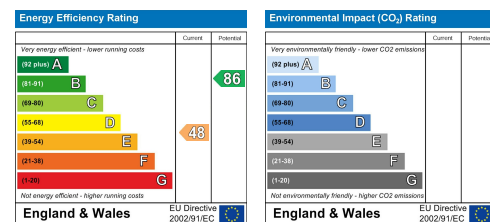
Floor Plan



TOTAL FLOOR AREA: 1400 sq.ft. (130.0 sq.m.) approx.
Whilst every attempt has been made to ensure the accuracy of the floorplan contained here, measurements of doors, windows, rooms and any other items are approximate and no responsibility is taken for any error, omission or mis-statement. This plan is for illustrative purposes only and should be used as such by any prospective purchaser. The services, systems and appliances shown have not been tested and no guarantee as to their operability or efficiency can be given.
Made with Metropix ©2021



These particulars, whilst believed to be accurate are set out as a general outline only for guidance and do not constitute any part of an offer or contract. Intending purchasers should not rely on them as statements of representation of fact, but must satisfy themselves by inspection or otherwise as to their accuracy. No person in this firm's employment has the authority to make or give any representation or warranty in respect of the property.



5 The Fairway
Fareham, PO16 8NR

*** THREE DOUBLE BEDROOMS & GARAGE + LOTS OF OFF ROAD PARKING ***

Castles are proud to welcome to the market this three bedroom mid terrace property in the popular location of The Fairway, Portchester.

The property has just had a loft conversion completed so there is now a large master bedroom with dressing area and brand new ensuite shower room on the top floor.

The first floor consists of two double bedrooms and a brand new bathroom in the final stages of being completed.

The ground floor has a fair sized lounge room, modern fitted kitchen and a lean to on the rear with downstairs w/c. The lean to is in need of a little TLC but has the ability to add large extension and open up if wanted to.

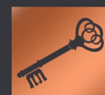
The large garden is south west facing so nice and sunny. It has rear access to the off road parking spaces and detached garage.

For more info or to arrange a viewing on this property please call Castles today.

Offers over £300,000

DIRECTORS

CHARLES TUSON • GARY AGAR • SEAN WREN



1 CASTLE STREET
PORTCHESTER
PO16 9QD



02394318899



CHARLES@CASTLESTATES.CO.UK
GARY@CASTLESTATES.CO.UK
SEAN@CASTLESTATES.CO.UK

COMPANY NUMBER: 12821075 • VAT NUMBER: 356389459

5 The Fairway

Fareham, PO16 8NR



- LOFT COVERSION
- LARGE GARDEN
- POTENTIAL TO EXTEND
- OFF ROAD PARKING TO THE REAR
- WELL PRESENTED THROUGHOUT
- THREE DOUBLE BEDROOMS
- GARAGE
- PORTCHESTER LOCATION
- CLOSE TO LOCAL SHOPS
- BRAND NEW BATHROOM

LOUNGE

14'9" x 14'9" (4.5 x 4.5)

KITCHEN

17'8" x 7'6" (5.4 x 2.3)

LEAN TO

14'9" x 5'10" (4.5 x 1.8)

W/C

3'3" x 7'2" (1 x 2.2)

BEDROOM ONE

16'4" x 13'1" (5 x 4)

ENSUITE

7'2" x 5'6" (2.2 x 1.7)

BEDROOM TWO

13'1" x 10'5" (4.0 x 3.2)

BEDROOM THREE

9'6" x 9'2" (2.9 x 2.8)

BATHROOM

7'6" x 6'2" (2.3 x 1.9)

Financial Services

If you are looking to get a comparison on your mortgage deal then do let us know as we can put you in touch with some independent mortgage advisors that would be happy to help. It is always worth a last minute comparison before you purchase a property as the current deals can change weekly.

Solicitors

If you are looking for a solicitor to handle the conveyancing process then do let us know as we can point you in the direction of some local, well recommended companies that would be happy to help and provide you with a quote.

